



# Central Pipe Fabrication (Plastics) Pty Ltd

4 Strezlecki Grove  
Laverton Vic 3028  
PO Box 474  
Laverton Vic 3028

Tel: 9369 7599  
Fax: 9369 7655  
Email: [centralpipefabrication@bigpond.com](mailto:centralpipefabrication@bigpond.com)  
ABN 88 069 473 936

## PRODUCTS

## PAGE

### DWV Fittings

Bends - Lobster Back	2
Bends/Elbows - Plain	2
Boss Junctions (Saddles) - to suit PVC	4
Boundary Traps	5
Caps - Push On	4
Couplings - Joint	4
Couplings - Slab Repair	5
Flanges - Joint	5
Flap Valves	5
Inspection Tees - 27A	4
Junctions - Double	4
Junctions 45°	3
Junctions/Tees 90°	3
Level Invert Tapers (LIT)	6
Manhole Drop Bends	2
Reducers - Joint (Concentric)	6
Reducing Bushes	6
Slip Sockets/Repair Couplings	5
Vent Cowls	5

Gas Fittings 1

HDE Fittings 1

HDE Sweep Bends 1

Kerb Adaptors 1

Slotting 1

## PRODUCTS

## PAGE

### Stormwater Fittings

Bends - Lobster Back	7
Bends/Elbows - Plain	7
Boss Junctions (Saddles) - to suit PVC	9
Caps - Push On	10
Couplings - Joint	10
Couplings - Slab Repair	10
Down Pipe Adaptors	12
Flanges - Joint	10
Junction/Tee 90°	9
Junctions 45°	8
Level Invert Taper (LIT)	11
Reducer - Joint (Concentric)	10
Reducing Bushes	11

### Tanks & Traps

Acid Neutralising Tanks	15
Grease Traps - Above Ground	13
Grease Traps - Below Ground	14
Mixing Tanks	15
Plaster Traps/Settling Tanks	15



# Central Pipe Fabrication (Plastics) Pty Ltd

4 Strezlecki Grove  
Laverton Vic 3028  
PO Box 474  
Laverton Vic 3028

Tel: 9369 7599  
Fax: 9369 7655  
Email: centralpipefabrication@bigpond.com  
ABN 88 069 473 936

**CODE DESCRIPTION**

## MISCELLANEOUS FITTINGS

Delivery Charge                      Freight                      Delivery to Metro Melbourne Sites Only

Boss (Saddles)                      Boss Junction to suit FRC, EW, Copper, etc.

Kerb Adaptor Products  
Produced from Class 9 pressure pipe

	100 Offset Kerb Adaptor - to suit DWV fitting
DKAO100	
DKAS100	100 Kerb Adaptor Sleeve

Slotting                      PVC slotting all sizes  
slot width 1.5mm or 4mm  
slot length - various (normally 100mm)  
rows of slots to customer specifications

## HDE Fittings

### REDUCERS

	50mm x 63mm Reducer F-F
	80mm x 63mm Reducer F-F
	100mm x 80mm Reducer F-F
	125mm x 100mm Reducer F-F
	150mm x 125mm Reducer F-F

\*\* OTHER COMBINATIONS ARE AVAILABLE \*\*

### ADAPTORS

	63mm P.E. x 50mm Telstra
	110mm Poly x 100mm Communication
	125mm Poly x 100mm Electrical

\*\* OTHER COMBINATIONS ARE AVAILABLE \*\*

## HDE & PRESSURE SWEEP BENDS

50mm, 63mm, 80mm, 100mm, 125mm, 150mm HDE  
x 45° or 90°  
at radiuses starting at 1.2 metres to at least 10 metres

\*\* ANY ANGLE IS AVAILABLE & BENDS ARE AVAILABLE AS M-F, F-F or M-M \*\*

\*\* NOTE: A LARGE RANGE OF PRESSURE BENDS ARE AVAILABLE  
ANY ANGLE, ANY RADIUS UP TO 150MM PRESSURE PIPE \*\*

## GAS FITTINGS

Access tubes	AT100	100mm Access Tubes
Spindle	SEPE50	50mm spindle extension for PE line
Valve Adaptor	VA50	50mm Valve Adaptor cap 50mm Sq. Drive

**NB. All fabricated fittings, tanks and specially made products are strictly non-returnable, unless otherwise arranged. For any further enquires please contact Stephen Tennyson.**



# Central Pipe Fabrication (Plastics) Pty Ltd

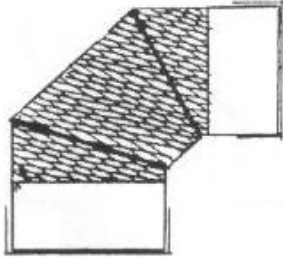
4 Strezlecki Grove  
Laverton Vic 3028  
PO Box 474  
Laverton Vic 3028

Tel: 9369 7599  
Fax: 9369 7655  
Email: centralpipefabrication@bigpond.com  
ABN 88 069 473 936

CODE DESCRIPTION

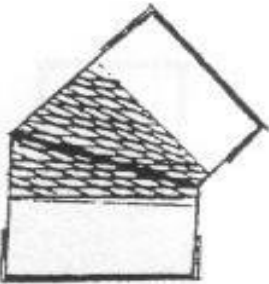
## DWV FITTINGS

### SOLVENT CEMENT JOINT LOBSTER BACK BEND



DB22560F	225 60° Lobster Back Bend F-F
DB22560M	225 60° Lobster Back Bend M-F
DB22590F	225 90° Lobster Back Bend F-F
DB22590M	225 90° Lobster Back Bend M-F
DB30060F	300 60° Lobster Back Bend F-F
DB30060M	300 60° Lobster Back Bend M-F
DB30090F	300 90° Lobster Back Bend F-F
DB30090M	300 90° Lobster Back Bend M-F
DB37590F	375 90° Lobster Back Bend F-F
DB37590M	375 90° Lobster Back Bend M-F

### SOLVENT CEMENT JOINT PLAIN BEND/ELBOW



DB22515F	225 15° Plain Bend F-F
DB22515M	225 15° Plain Bend M-F
DB22530F	225 30° Plain Bend F-F
DB22530M	225 30° Plain Bend M-F
DB22545F	225 45° Plain Bend F-F
DB22545M	225 45° Plain Bend M-F
DB30015F	300 15° Plain Bend F-F
DB30015M	300 15° Plain Bend M-F
DB30030F	300 30° Plain Bend F-F
DB30030M	300 30° Plain Bend M-F
DB30045F	300 45° Plain Bend F-F
DB30045M	300 45° Plain Bend M-F
DB37515F	375 15° Plain Bend F-F
DB37515M	375 15° Plain Bend M-F
DB37530F	375 30° Plain Bend F-F
DB37530M	375 30° Plain Bend M-F
DB37545F	375 45° Plain Bend F-F
DB37545M	375 45° Plain Bend M-F

### MANHOLE DROP BEND

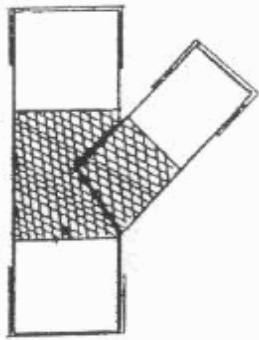
MDB225150F	225 x 150 DWV Manhole Drop Bend F-F
MDB225150M	225 x 150 DWV Manhole Drop Bend M-F



CODE DESCRIPTION

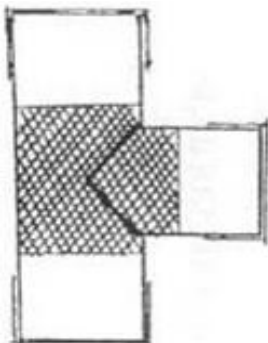
## DWV FITTINGS

### SOLVENT CEMENT JOINT 45° JUNCTION



DJ225100F	225 x 100 45° Junction F-F
DJ225100M	225 x 100 45° Junction M-F
DJ225150F	225 x 150 45° Junction F-F
DJ225150M	225 x 150 45° Junction M-F
DJ225225F	225 45° Junction F-F
DJ225225M	225 45° Junction M-F
DJ300100F	300 x 100 45° Junction F-F
DJ300100M	300 x 100 45° Junction M-F
DJ300150F	300 x 150 45° Junction F-F
DJ300150M	300 x 150 45° Junction M-F
DJ300225F	300 x 225 45° Junction F-F
DJ300225M	300 x 225 45° Junction M-F
DJ300300F	300 45° Junction F-F
DJ300300M	300 45° Junction M-F
DJ375100F	375 x 100 45° Junction F-F
DJ375100M	375 x 100 45° Junction M-F
DJ375150F	375 x 150 45° Junction F-F
DJ375150M	375 x 150 45° Junction M-F
DJ375225F	375 x 225 45° Junction F-F
DJ375225M	375 x 225 45° Junction M-F
DJ375300F	375 x 300 45° Junction F-F
DJ375300M	375 x 300 45° Junction M-F
DJ375375F	375 45° Junction F-F
DJ375375M	375 45° Junction M-F

### SOLVENT CEMENT JOINT 90° JUNCTION/TEE



DT225100F	225 x 100 90° Junction/tee F-F
DT225100M	225 x 100 90° Junction/tee M-F
DT225150F	225 x 150 90° Junction/tee F-F
DT225150M	225 x 150 90° Junction/tee M-F
DT225225F	225 90° Junction/tee F-F
DT225225M	225 90° Junction/tee M-F
DT300100F	300 x 100 90° Junction/tee F-F
DT300100M	300 x 100 90° Junction/tee M-F
DT300150F	300 x 150 90° Junction/tee F-F
DT300150M	300 x 150 90° Junction/tee M-F
DT300225F	300 x 225 90° Junction/tee F-F
DT300225M	300 x 225 90° Junction/tee M-F
DT300300F	300 90° Junction/tee F-F
DT300300M	300 90° Junction/tee M-F
DT375100F	375 x 100 90° Junction/tee F-F
DT375100M	375 x 100 90° Junction/tee M-F
DT375150F	375 x 150 90° Junction/tee F-F
DT375150M	375 x 150 90° Junction/tee M-F
DT375225F	375 x 225 90° Junction/tee F-F
DT375225M	375 x 225 90° Junction/tee M-F
DT375300F	375 x 300 90° Junction/tee F-F
DT375300M	375 x 300 90° Junction/tee M-F
DT375375F	375 90° Junction/tee F-F
DT375375M	375 90° Junction/tee M-F



# Central Pipe Fabrication (Plastics) Pty Ltd

4 Strezlecki Grove  
Laverton Vic 3028  
PO Box 474  
Laverton Vic 3028

Tel: 9369 7599  
Fax: 9369 7655  
Email: centralpipefabrication@bigpond.com  
ABN 88 069 473 936

---

CODE	DESCRIPTION
------	-------------

## DWV FITTINGS

### SOLVENT CEMENT DOUBLE JUNCTION

DDJ10090	100 x 90° Double Junction
DDJ10045	100 x 45° Double Junction

---

### SOLVENT CEMENT JOINT 90° INSPECTION TEE (with cap) - 27A

DIT225150F	225 x 150 90° Inspection Tee F-F
DIT225150M	225 x 150 90° Inspection Tee M-F
DIT300150F	300 x 150 90° Inspection Tee F-F
DIT300150M	300 x 150 90° Inspection Tee M-F
DIT375150F	375 x 150 90° Inspection Tee F-F
DIT375150M	375 x 150 90° Inspection Tee M-F

---

### BOSS JUNCTIONS (SADDLES) - to suit PVC

DBJ15010045	150 x 100 x 45° Boss Junction
DBJ15010090	150 x 100 x 90° Boss Junction
DBJ22510045	225 x 100 x 45° Boss Junction
DBJ22510090	225 x 100 x 90° Boss Junction
DBJ22515045	225 x 150 x 45° Boss Junction
DBJ22515090	225 x 150 x 90° Boss Junction
DBJ30010045	300 x 100 x 45° Boss Junction
DBJ30010090	300 x 100 x 90° Boss Junction
DBJ30015045	300 x 150 x 45° Boss Junction
DBJ30015090	300 x 150 x 90° Boss Junction
DBJ30022545	300 x 225 x 45° Boss Junction
DBJ30022590	300 x 225 x 90° Boss Junction

---

### SOLVENT CEMENT JOINT PUSH ON CAP

DPOC225	225 Plain Push On Cap
DPOC300	300 Plain Push On Cap
DPOC375	375 Plain Push On Cap

---

### SOLVENT CEMENT JOINT COUPLING F&F

DC225	225 Plain Coupling F-F
DC300	300 Plain Coupling F-F
DC375	375 Plain Coupling F-F

---

### SLAB REPAIR COUPLING

∞	DSRC40	40 Slab Repair Coupling
∞	DSRC50	50 Slab Repair Coupling
∞	DSRC65	65 Slab Repair Coupling
□	DSRC80	80 Slab Repair Coupling
□	DSRC100	100 Slab Repair Coupling
△	DSRC150	150 Slab Repair Coupling
	DSRC225	225 Slab Repair Coupling
	DSRC300	300 Slab Repair Coupling



# Central Pipe Fabrication (Plastics) Pty Ltd

4 Strezlecki Grove  
Laverton Vic 3028  
PO Box 474  
Laverton Vic 3028

Tel: 9369 7599  
Fax: 9369 7655  
Email: centralpipefabrication@bigpond.com  
ABN 88 069 473 936

---

CODE	DESCRIPTION
------	-------------

## DWV FITTINGS

### REPAIR COUPLING (SLIP SOCKETS)

□ DRCSS40	40 Repair Coupling Slip Socket
□ DRCSS50	50 Repair Coupling Slip Socket
□ DRCSS65	65 Repair Coupling Slip Socket
□ DRCSS80	80 Repair Coupling Slip Socket
∞ DRCSS100	100 Repair Coupling Slip Socket
△ DRCSS150	150 Repair Coupling Slip Socket
DRCSS225	225 Repair Coupling Slip Socket
DRCSS300	300 Repair Coupling Slip Socket

---

### SOLVENT CEMENT JOINT FLANGE

DF100	100 Flange
DF150	150 Flange
DF225	225 Flange
DF300	300 Flange
DF375	375 Flange

NOTE: ALL FLANGES 10mm THICK UNLESS OTHERWISE SPECIFIED

---

### VENT COWL

DVC100	100mm DWV Vent Cowl
DVC150	150mm DWV Vent Cowl
DVC225	225mm DWV Vent Cowl

---

### BOUNDARY TRAP

BTD225	225mm DWV Boundary Trap
--------	-------------------------

---

### FLAP VALVE

FVD100	100mm DWV Flap Valve
FVD150	150mm DWV Flap Valve
FVD225	225mm DWV Flap Valve
FVD300	300mm DWV Flap Valve

---



# Central Pipe Fabrication (Plastics) Pty Ltd

4 Strezlecki Grove  
Laverton Vic 3028  
PO Box 474  
Laverton Vic 3028

Tel: 9369 7599  
Fax: 9369 7655  
Email: centralpipefabrication@bigpond.com  
ABN 88 069 473 936

**CODE                      DESCRIPTION**

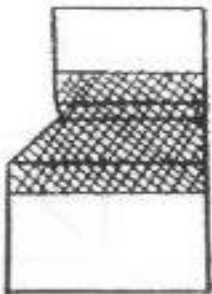
## DWV FITTINGS

### **SOLVENT CEMENT JOINT REDUCER (CONCENTRIC)**



DR225100F	225 x 100 Reducer F-F
DR225100M	225 x 100 Reducer M-F
DR225150F	225 x 150 Reducer F-F
DR225150M	225 x 150 Reducer M-F
DR300100F	300 x 100 Reducer F-F
DR300100M	300 x 100 Reducer M-F
DR300150F	300 x 150 Reducer F-F
DR300150M	300 x 150 Reducer M-F
DR300225F	300 x 225 Reducer F-F
DR300225M	300 x 225 Reducer M-F
DR375100F	375 x 100 Reducer F-F
DR375100M	375 x 100 Reducer M-F
DR375150F	375 x 150 Reducer F-F
DR375150M	375 x 150 Reducer M-F
DR375225F	375 x 225 Reducer F-F
DR375225M	375 x 225 Reducer M-F
DR375300F	375 x 300 Reducer F-F
DR375300M	375 x 300 Reducer M-F

### **SOLVENT CEMENT JOINT LEVEL INVERT TAPER**



DLIT225100F	225 x 100 L I T F-F
DLIT225100M	225 x 100 L I T M-F
DLIT225150F	225 x 150 L I T F-F
DLIT225150M	225 x 150 L I T M-F
DLIT300100F	300 x 100 L I T F-F
DLIT300100M	300 x 100 L I T M-F
DLIT300150F	300 x 150 L I T F-F
DLIT300150M	300 x 150 L I T M-F
DLIT300225F	300 x 225 L I T F-F
DLIT300225M	300 x 225 L I T M-F
DLIT375100F	375 x 100 L I T F-F
DLIT375100M	375 x 100 L I T M-F
DLIT375150F	375 x 150 L I T F-F
DLIT375150M	375 x 150 L I T M-F
DLIT375225F	375 x 225 L I T F-F
DLIT375225M	375 x 225 L I T M-F
DLIT375300F	375 x 300 L I T F-F
DLIT375300M	375 x 300 L I T M-F

### **REDUCING BUSHES**

DRB225100	225 x 100 Reducing Bush M-F
DRB225150	225 x 150 Reducing Bush M-F
DRB300100	300 x 100 Reducing Bush M-F
DRB300150	300 x 150 Reducing Bush M-F
DRB300225	300 x 225 Reducing Bush M-F



# Central Pipe Fabrication (Plastics) Pty Ltd

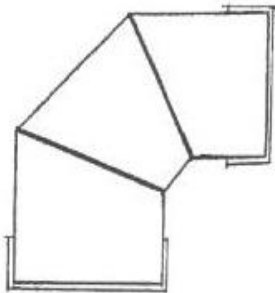
4 Strezlecki Grove  
Laverton Vic 3028  
PO Box 474  
Laverton Vic 3028

Tel: 9369 7599  
Fax: 9369 7655  
Email: centralpipefabrication@bigpond.com  
ABN 88 069 473 936

CODE DESCRIPTION

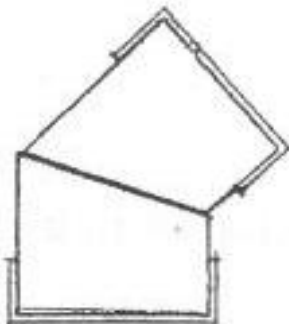
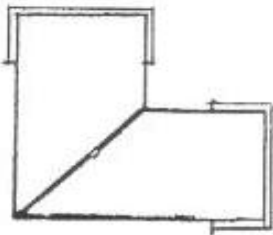
## STORMWATER FITTINGS

### SOLVENT CEMENT JOINT LOBSTER BACK BEND



SB20045F	200	45° Lobster Back Bend F-F
SB20045M	200	45° Lobster Back Bend M-F
SB20090F	200	90° Lobster Back Bend F-F
SB20090M	200	90° Lobster Back Bend M-F
SB22545F	225	45° Lobster Back Bend F-F
SB22545M	225	45° Lobster Back Bend M-F
SB22590F	225	90° Lobster Back Bend F-F
SB22590M	225	90° Lobster Back Bend M-F
SB30045F	300	45° Lobster Back Bend F-F
SB30045M	300	45° Lobster Back Bend M-F
SB30090F	300	90° Lobster Back Bend F-F
SB30090M	300	90° Lobster Back Bend M-F
SB37590F	375	90° Lobster Back Bend F-F
SB37590M	375	90° Lobster Back Bend M-F

### SOLVENT CEMENT JOINT PLAIN BEND/ELBOW



SE20015F	200	15° Plain Elbow F-F
SE20015M	200	15° Plain Elbow M-F
SE20030F	200	30° Plain Elbow F-F
SE20030M	200	30° Plain Elbow M-F
SE20045F	200	45° Plain Elbow F-F
SE20045M	200	45° Plain Elbow M-F
SE20060F	200	60° Plain Elbow F-F
SE20060M	200	60° Plain Elbow M-F
SE20090F	200	90° Plain Elbow F-F
SE20090M	200	90° Plain Elbow M-F
SE22515F	225	15° Plain Elbow F-F
SE22515M	225	15° Plain Elbow M-F
SE22530F	225	30° Plain Elbow F-F
SE22530M	225	30° Plain Elbow M-F
SE22545F	225	45° Plain Elbow F-F
SE22545M	225	45° Plain Elbow M-F
SE22560F	225	60° Plain Elbow F-F
SE22560M	225	60° Plain Elbow M-F
SE22590F	225	90° Plain Elbow F-F
SE22590M	225	90° Plain Elbow M-F
SE30015F	300	15° Plain Elbow F-F
SE30015M	300	15° Plain Elbow M-F
SE30030F	300	30° Plain Elbow F-F
SE30030M	300	30° Plain Elbow M-F
SE30045F	300	45° Plain Elbow F-F
SE30045M	300	45° Plain Elbow M-F
SE30060F	300	60° Plain Elbow F-F
SE30060M	300	60° Plain Elbow M-F
SE30090F	300	90° Plain Elbow F-F
SE30090M	300	90° Plain Elbow M-F
SE37515F	375	15° Plain Elbow F-F
SE37515M	375	15° Plain Elbow M-F
SE37530F	375	30° Plain Elbow F-F
SE37530M	375	30° Plain Elbow M-F
SE37545F	375	45° Plain Elbow F-F
SE37545M	375	45° Plain Elbow M-F





# Central Pipe Fabrication (Plastics) Pty Ltd

4 Strezlecki Grove  
Laverton Vic 3028  
PO Box 474  
Laverton Vic 3028

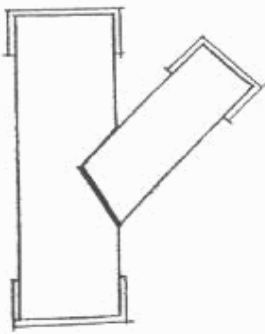
Tel: 9369 7599  
Fax: 9369 7655  
Email: [centralpipefabrication@bigpond.com](mailto:centralpipefabrication@bigpond.com)  
ABN 88 069 473 936

## **CODE**                      **DESCRIPTION**

### **STORMWATER FITTINGS**

#### **SOLVENT CEMENT JOINT 45° JUNCTION**

SJ200100F	200 x 100 45° Junction F-F
SJ200100M	200 x 100 45° Junction M-F
SJ200150F	200 x 150 45° Junction F-F
SJ200150M	200 x 150 45° Junction M-F
SJ200200F	200        45° Junction F-F
SJ200200M	200        45° Junction M-F
SJ225100F	225 x 100 45° Junction F-F
SJ225100M	225 x 100 45° Junction M-F
SJ225150F	225 x 150 45° Junction F-F
SJ225150M	225 x 150 45° Junction M-F
SJ225200F	225 x 200 45° Junction F-F
SJ225200M	225 x 200 45° Junction M-F
SJ225225F	225        45° Junction F-F
SJ225225M	225        45° Junction M-F
SJ300100F	300 x 100 45° Junction F-F
SJ300100M	300 x 100 45° Junction M-F
SJ300150F	300 x 150 45° Junction F-F
SJ300150M	300 x 150 45° Junction M-F
SJ300200F	300 x 200 45° Junction F-F
SJ300200M	300 x 200 45° Junction M-F
SJ300225F	300 x 225 45° Junction F-F
SJ300225M	300 x 225 45° Junction M-F
SJ300300F	300        45° Junction F-F
SJ300300M	300        45° Junction M-F
SJ375100F	375 x 100 45° Junction F-F
SJ375100M	375 x 100 45° Junction M-F
SJ375150F	375 x 150 45° Junction F-F
SJ375150M	375 x 150 45° Junction M-F
SJ375200F	375 x 200 45° Junction F-F
SJ375200M	375 x 200 45° Junction M-F
SJ375225F	375 x 225 45° Junction F-F
SJ375225M	375 x 225 45° Junction M-F
SJ375300F	375 x 300 45° Junction F-F
SJ375300M	375 x 300 45° Junction M-F
SJ375375F	375        45° Junction F-F
SJ375375M	375        45° Junction M-F





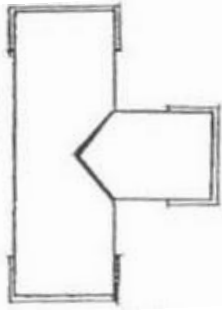
# Central Pipe Fabrication (Plastics) Pty Ltd

4 Strezlecki Grove  
Laverton Vic 3028  
PO Box 474  
Laverton Vic 3028

Tel: 9369 7599  
Fax: 9369 7655  
Email: [centralpipefabrication@bigpond.com](mailto:centralpipefabrication@bigpond.com)  
ABN 88 069 473 936

## STORMWATER FITTINGS

### SOLVENT CEMENT JOINT 90° JUNCTION/TEE



CODE	DESCRIPTION
ST200100F	200 x 100 90° Junction/tee F-F
ST200100M	200 x 100 90° Junction/tee M-F
ST200150F	200 x 150 90° Junction/tee F-F
ST200150M	200 x 150 90° Junction/tee M-F
ST200200F	200 90° Junction/tee F-F
ST200200M	200 90° Junction/tee M-F
ST225100F	225 x 100 90° Junction/tee F-F
ST225100M	225 x 100 90° Junction/tee M-F
ST225150F	225 x 150 90° Junction/tee F-F
ST225150M	225 x 150 90° Junction/tee M-F
ST225200F	225 x 200 90° Junction/tee F-F
ST225200M	225 x 200 90° Junction/tee M-F
ST225225F	225 90° Junction/tee F-F
ST225225M	225 90° Junction/tee M-F
ST300100F	300 x 100 90° Junction/tee F-F
ST300100M	300 x 100 90° Junction/tee M-F
ST300150F	300 x 150 90° Junction/tee F-F
ST300150M	300 x 150 90° Junction/tee M-F
ST300200F	300 x 200 90° Junction/tee F-F
ST300200M	300 x 200 90° Junction/tee M-F
ST300225F	300 x 225 90° Junction/tee F-F
ST300225M	300 x 225 90° Junction/tee M-F
ST300300F	300 90° Junction/tee F-F
ST300300M	300 90° Junction/tee M-F
ST375100F	375 x 100 90° Junction/tee F-F
ST375100M	375 x 100 90° Junction/tee M-F
ST375150F	375 x 150 90° Junction/tee F-F
ST375150M	375 x 150 90° Junction/tee M-F
ST375200F	375 x 200 90° Junction/tee F-F
ST375200M	375 x 200 90° Junction/tee M-F
ST375225F	375 x 225 90° Junction/tee F-F
ST375225M	375 x 225 90° Junction/tee M-F
ST375300F	375 x 300 90° Junction/tee F-F
ST375300M	375 x 300 90° Junction/tee M-F
ST375375F	375 90° Junction/tee F-F
ST375375M	375 90° Junction/tee M-F

### BOSS JUNCTIONS (SADDLES)

BJ15010045	150 x 100 x 45° Boss Junction
BJ15010090	150 x 100 x 90° Boss Junction
BJ22510045	225 x 100 x 45° Boss Junction
BJ22510090	225 x 100 x 90° Boss Junction
BJ22515045	225 x 150 x 45° Boss Junction
BJ22515090	225 x 150 x 90° Boss Junction
BJ30010045	300 x 100 x 45° Boss Junction
BJ30010090	300 x 100 x 90° Boss Junction
BJ30015045	300 x 150 x 45° Boss Junction
BJ30015090	300 x 150 x 90° Boss Junction
BJ30022545	300 x 225 x 45° Boss Junction
BJ30022590	300 x 225 x 90° Boss Junction



# Central Pipe Fabrication (Plastics) Pty Ltd

4 Strezlecki Grove  
Laverton Vic 3028  
PO Box 474  
Laverton Vic 3028

Tel: 9369 7599  
Fax: 9369 7655  
Email: centralpipefabrication@bigpond.com  
ABN 88 069 473 936

---

## STORMWATER FITTINGS

### SOLVENT CEMENT JOINT PUSH ON CAP

CODE	DESCRIPTION
SPOC200	200 Plain Push On Cap
SPOC225	225 Plain Push On Cap
SPOC300	300 Plain Push On Cap
SPOC375	375 Plain Push On Cap

---

### SOLVENT CEMENT JOINT COUPLING F&F

SC200	200 Plain Coupling F-F
SC225	225 Plain Coupling F-F
SC300	300 Plain Coupling F-F
SC375	375 Plain Coupling F-F

---

### SLAB REPAIR COUPLING

<input type="checkbox"/> SSRC90	90 Slab Repair Coupling SW
SSRC150	150 Slab Repair Coupling SW
SSRC225	225 Slab Repair Coupling SW
SSRC300	300 Slab Repair Coupling SW

---

### SOLVENT CEMENT JOINT FLANGE

SF150	150 Flange
SF200	200 Flange
SF225	225 Flange
SF300	300 Flange
SF375	375 Flange

NOTE: ALL FLANGES 10mm THICK UNLESS OTHERWISE SPECIFIED

---

### SOLVENT CEMENT JOINT REDUCER (CONCENTRIC)



SR200100F	200 x 100 Reducer F-F
SR200100M	200 x 100 Reducer M-F
SR200150F	200 x 150 Reducer F-F
SR200150M	200 x 150 Reducer M-F
SR225100F	225 x 100 Reducer F-F
SR225100M	225 x 100 Reducer M-F
SR225150F	225 x 150 Reducer F-F
SR225150M	225 x 150 Reducer M-F
SR225200F	225 x 200 Reducer F-F
SR225200M	225 x 200 Reducer M-F
SR300100F	300 x 100 Reducer F-F
SR300100M	300 x 100 Reducer M-F
SR300150F	300 x 150 Reducer F-F
SR300150M	300 x 150 Reducer M-F
SR300200F	300 x 200 Reducer F-F
SR300200M	300 x 200 Reducer M-F



# Central Pipe Fabrication (Plastics) Pty Ltd

4 Strezlecki Grove  
Laverton Vic 3028  
PO Box 474  
Laverton Vic 3028

Tel: 9369 7599  
Fax: 9369 7655  
Email: centralpipefabrication@bigpond.com  
ABN 88 069 473 936

CODE DESCRIPTION

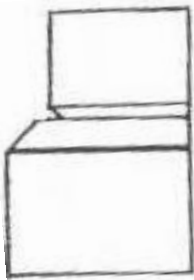
## STORMWATER FITTINGS

### SOLVENT CEMENT JOINT REDUCER (CONCENTRIC) CONT'D



SR300225F	300 x 225 Reducer F-F
SR300225M	300 x 225 Reducer M-F
SR375100F	375 x 100 Reducer F-F
SR375100M	375 x 100 Reducer M-F
SR375150F	375 x 150 Reducer F-F
SR375150M	375 x 150 Reducer M-F
SR375200F	375 x 200 Reducer F-F
SR375200M	375 x 200 Reducer M-F
SR375225F	375 x 225 Reducer F-F
SR375225M	375 x 225 Reducer M-F
SR375300F	375 x 300 Reducer F-F
SR375300M	375 x 300 Reducer M-F

### SOLVENT CEMENT JOINT LEVEL INVERT TAPER



SLIT200100F	200 x 100 L I T F-F
SLIT200100M	200 x 100 L I T M-F
SLIT200150F	200 x 150 L I T F-F
SLIT200150M	200 x 150 L I T M-F
SLIT225100F	225 x 100 L I T F-F
SLIT225100M	225 x 100 L I T M-F
SLIT225150F	225 x 150 L I T F-F
SLIT225150M	225 x 150 L I T M-F
SLIT225200F	225 x 200 L I T F-F
SLIT225200M	225 x 200 L I T M-F
SLIT300100F	300 x 100 L I T F-F
SLIT300100M	300 x 100 L I T M-F
SLIT300150F	300 x 150 L I T F-F
SLIT300150M	300 x 150 L I T M-F
SLIT300200F	300 x 200 L I T F-F
SLIT300200M	300 x 200 L I T M-F
SLIT300225F	300 x 225 L I T F-F
SLIT300225M	300 x 225 L I T M-F
SLIT375100F	375 x 100 L I T F-F
SLIT375100M	375 x 100 L I T M-F
SLIT375150F	375 x 150 L I T F-F
SLIT375150M	375 x 150 L I T M-F
SLIT375200F	375 x 200 L I T F-F
SLIT375200M	375 x 200 L I T M-F
SLIT375225F	375 x 225 L I T F-F
SLIT375225M	375 x 225 L I T M-F
SLIT375300F	375 x 300 L I T F-F
SLIT375300M	375 x 300 L I T M-F

### REDUCING BUSH

SRB225100	225 x 100 Reducing Bush M-F
SRB225150	225 x 150 Reducing Bush M-F
SRB300100	300 x 100 Reducing Bush M-F
SRB300150	300 x 150 Reducing Bush M-F
SRB300225	300 x 225 Reducing Bush M-F

NB. All fabricated fittings, tanks and specially made products are strictly non-returnable, unless otherwise arranged. For any further enquires please contact Stephen Tennyson.



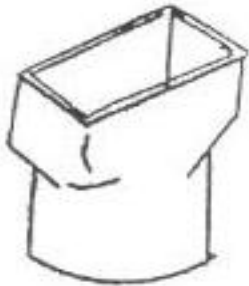
# Central Pipe Fabrication (Plastics) Pty Ltd

4 Strezlecki Grove  
Laverton Vic 3028  
PO Box 474  
Laverton Vic 3028

Tel: 9369 7599  
Fax: 9369 7655  
Email: centralpipefabrication@bigpond.com  
ABN 88 069 473 936

## STORMWATER FITTINGS

### DOWNPIPE ADAPTOR



CODE	DESCRIPTION
DPAO10010050	100Roundx100x50 Offset DPA
□ DPA908050	90 Round x 80 x 50 D.P.A
□ DPA9010080	90 Round x 100 x 80 D.P.A
□ DPA90100100	90 Round x 100 x 100 D.P.A
DPA90125100	90 Round x 125 x 100 D.P.A
DPA90150100	90 Round x 150 x 100 D.P.A
DPA90150125	90 Round x 150 x 125 D.P.A
DPA90150150	90 Round x 150 x 150 D.P.A
∞ DPA10010050	100 Round x 100 x 50 D.P.A
∞ DPA10010080	100 Round x 100 x 80 D.P.A
∞ DPA100100100	100 Round x 100 x 100 D.P.A
DPA10012580	100 Round x 125 x 80 D.P.A
DPA100125100	100 Round x 125 x 100 D.P.A
DPA100125125	100 Round x 125 x 125 D.P.A
Δ DPA100150100	100 Round x 150 x 100 D.P.A
DPA100150125	100 Round x 150 x 125 D.P.A
DPA100150150	100 Round x 150 x 150 D.P.A
DPA15010080	150 Round x 100 x 80 D.P.A
DPA150100100	150 Round x 100 x 100 D.P.A
DPA150125100	150 Round x 125 x 100 D.P.A
DPA150125125	150 Round x 125 x 125 D.P.A
Δ DPA150150100	150 Round x 150 x 100 D.P.A
DPA150150125	150 Round x 150 x 125 D.P.A
Δ DPA150150150	150 Round x 150 x 150 D.P.A
DPA150180180	150 Round x 180 x 180 D.P.A
DPA150200100	150 Round x 200 x 100 D.P.A
DPA150200125	150 Round x 200 x 125 D.P.A
DPA150200150	150 Round x 200 x 150 D.P.A
DPA150200200	150 Round x 200 x 200 D.P.A
DPA225200200	225 Round x 200 x 200 D.P.A
DPA225225225	225 Round x 225 x 225 D.P.A

Should you have an enquiry for a Down Pipe Adaptor which is not listed above, please do not hesitate to contact us. Chances are that we may be able to assist you.



# Central Pipe Fabrication (Plastics) Pty Ltd

4 Strezlecki Grove  
Laverton Vic 3028  
PO Box 474  
Laverton Vic 3028

Tel: 9369 7599  
Fax: 9369 7655  
Email: centralpipefabrication@bigpond.com  
ABN 88 069 473 936

## GREASE TRAPS PVC (6MM THICK) - ABOVE GROUND

\* Above ground grease traps come complete with an airtight lid, latches and seals

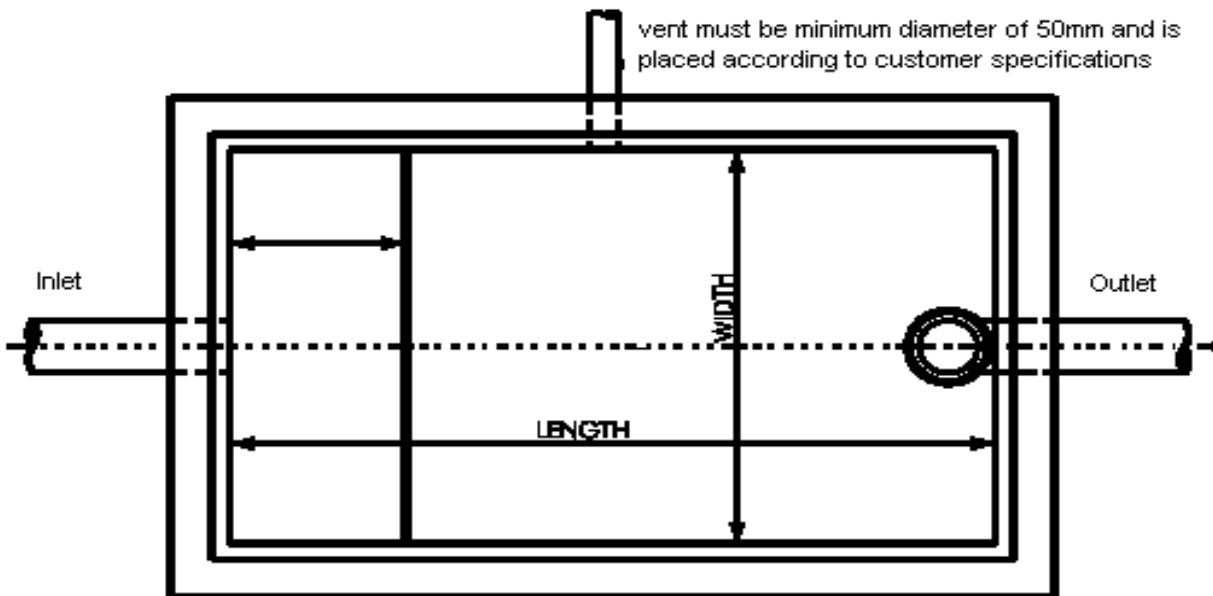
\* A plan view diagram is required to determine the size of the inlet and outlet and the position of the vent.

\* Dimensions of tanks can vary according to customer specifications, i.e., a lower height = a longer or wider tank

\* Note: Above Ground Tanks, 750Litre and above, are supplied with a steel surround frame.

LARGER TANKS ARE ALSO AVAILABLE P.O.A.

CODE	LITRES	LENGTH	WIDTH	HEIGHT
GT100L	100	610	405	605
GT150L	150	698	465	665
GT200L	200	760	510	716
GT250L	250	825	550	850
GT250	250	1160	550	605
GT300L	300	878	582	885
GT350L	350	930	620	910
GT400L	400	980	650	950
GT450L	450	1005	670	970
GT500L	500	1045	695	995
GT550L	550	1080	720	1020
GT600L	600	1110	740	1040
GT650L	650	1140	760	1060
GT700L	700	1170	780	1070
GT750L	750	1200	800	1100
GT800L	800	1220	810	1110
GT900L	900	1300	820	1150
GT1000L	1000	1350	850	1170
GT1100L	1100	1400	900	1200
GT1500L	1500	1600	1020	1220
GT2000L	2000	1800	1200	1220
GT2500L	2500	2440	1120	1220
GT3000L	3000	2440	1340	1220





# Central Pipe Fabrication (Plastics) Pty Ltd

4 Strezlecki Grove  
Laverton Vic 3028  
PO Box 474  
Laverton Vic 3028

Tel: 9369 7599  
Fax: 9369 7655  
Email: centralpipefabrication@bigpond.com  
ABN 88 069 473 936

## GREASE TRAPS PVC (6MM THICK) - BELOW GROUND

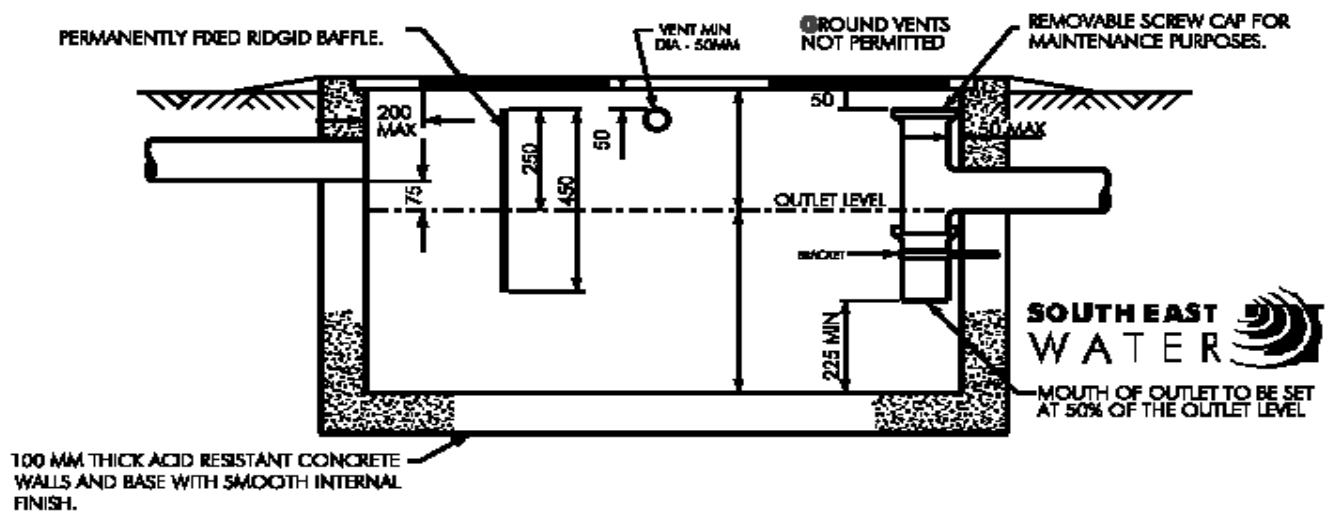
\* Below ground grease traps require a steel lid which is not supplied by Central Pipe Fabrication.

\* A plan view diagram is required to determine the size of the inlet and outlet and the position of the vent.

\* Dimensions of tanks can vary according to customer specifications, i.e., a lower height = a longer or wider tank

CODE	LITRES	LENGTH	WIDTH	HEIGHT
GTB100L	100	610	405	605
GTB150L	150	698	465	665
GTB200L	200	760	510	716
GTB250L	250	825	550	850
GTB250	250	1160	550	605
GTB300L	300	878	582	885
GTB350L	350	930	620	910
GTB400L	400	980	650	950
GTB450L	450	1005	670	970
GTB500L	500	1045	695	995
GTB550L	550	1080	720	1020
GTB600L	600	1110	740	1040
GTB650L	650	1140	760	1060
GTB700L	700	1170	780	1070
GTB750L	750	1200	800	1100
GTB800L	800	1220	810	1110
GTB900L	900	1300	820	1150
GTB1000L	1000	1350	850	1170
GTB1100L	1100	1400	900	1200
GTB1500L	1500	1600	1020	1220
GTB2000L	2000	1800	1200	1220
GTB2500L	2500	2440	1120	1220
GTB3000L	3000	2440	1340	1220

Below diagram refers to Grease Traps above 250L only



NB. All fabricated fittings, tanks and specially made products are strictly non-returnable, unless otherwise arranged. For any further enquires please contact Stephen Tennyson



# Central Pipe Fabrication (Plastics) Pty Ltd

4 Strezlecki Grove  
Laverton Vic 3028  
PO Box 474  
Laverton Vic 3028

Tel: 9369 7599  
Fax: 9369 7655  
Email: centralpipefabrication@bigpond.com  
ABN 88 069 473 936

## CODE DESCRIPTION

### Acid Neutralising Tanks

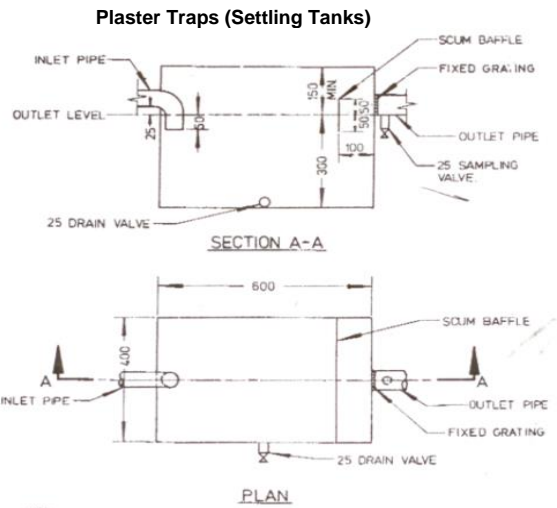
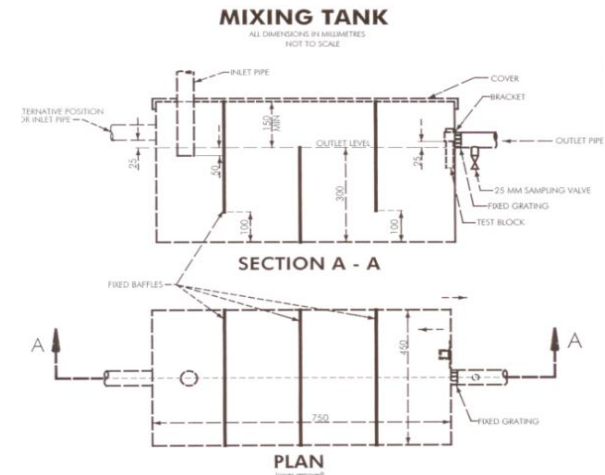
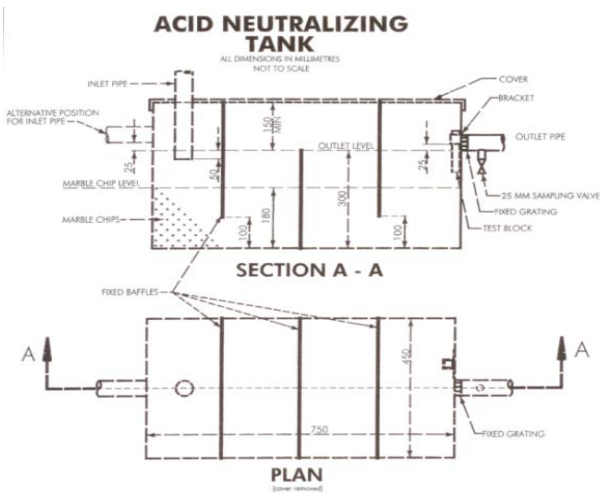
ANT27	27ltr Acid Neutralising Tank - L600 x W375 x H450mm
ANT60	60ltr Acid Neutralising Tank - L700 x W400 x H550mm
ANT100	100ltr Acid Neutralising Tank - L750 x W500 x H600mm

### Mixing Tanks

MT100	100ltr Mixing Tank - L750 x W340 x H550mm
MT120	120ltr Mixing Tank - L800 x W375 x H550mm
MT200	200ltr Mixing Tank - L870 x W470 x H650mm

### Plaster Traps (Settling tanks)

PT45	45ltr Plaster Trap - L400 x W400 x H450mm
PT72	72ltr Plaster Trap - L600 x W400 x H450mm
PT100	100Ltr Plaster Trap - L690 x W490 x H450mm
PT150	150ltr Plaster Trap - L750 x W460 x H520
PT250	250ltr Plaster Trap - L900 x W640 x H580



NB. All fabricated fittings, tanks and specially made products are strictly non-returnable, unless otherwise arranged. For any further enquires please contact Stephen Tennyson